

One&Only

The Palm, Dubai

Announcing a new and
exclusive resort in Dubai





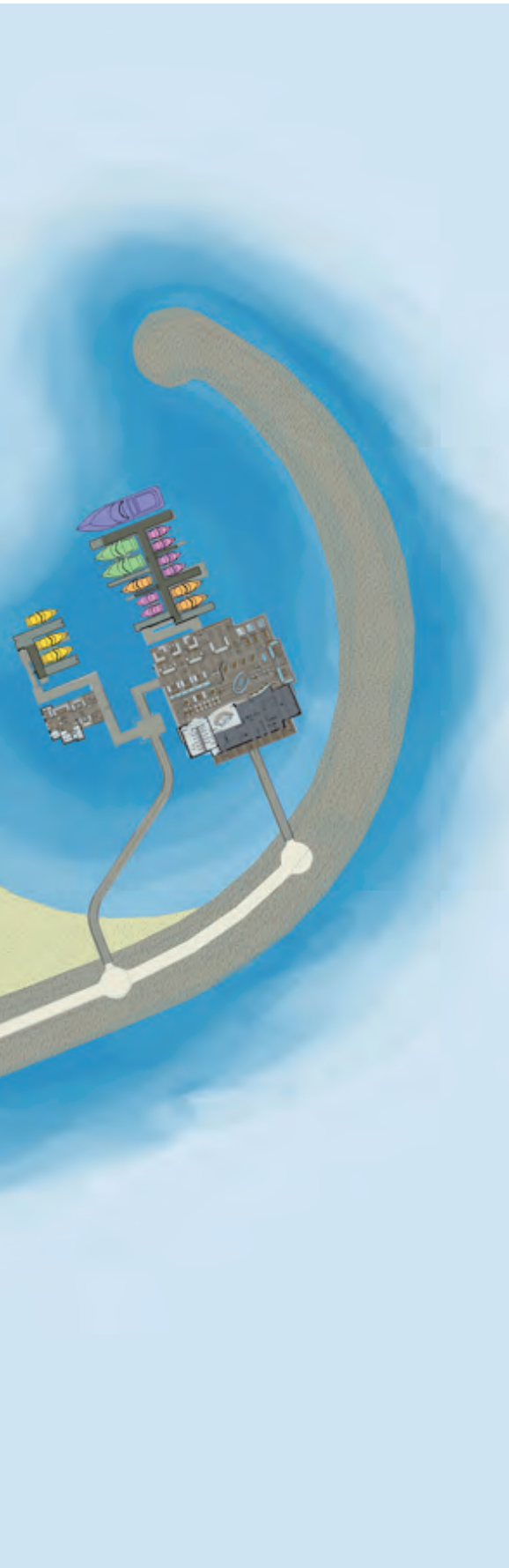
Located on the peninsula of one of the world's most spectacular landscapes, Palm Jumeirah, an exclusive enclave of impeccable style is secluded amidst lush gardens, fountains and pools along a sparkling shore.

On the horizon, the wonder and excitement of the New Dubai Skyline. Here, only a short journey by private water taxi or limousine, One&Only The Palm will be an oasis of stylish energy and tranquillity designed to elevate the senses.









With its enviable location on one of Dubai's most ambitious developments, Palm Jumeirah, guests will be mesmerised by striking views of a world-renowned destination just beyond the resort's exclusive marina and private harbour.

Below: 1 The Palace. 2 Residence & Spa. 3 Arabian Court. 4 One&Only The Palm. 5 Atlantis, The Palm. 6 Aquaventure.



Blending Moorish and Andalusian architectural design with a contemporary Arabian chic interior style, One&Only The Palm will evoke

a sense of understated elegance and distinctive luxury featuring immaculate gardens, cascading fountains, vaulted spaces and a rhythmic symmetry.

Below: Manor House. Above: Reception.









Beautifully styled and impeccably furnished, all accommodation will offer outdoor terrace or private pool with access to beaches and pools just steps away.

Opposite: Manor House accommodation with bathroom.
Below: Manor House with living area and private terrace.



Stunning and spacious with every modern amenity, accommodation will be secluded in a residential environment within magnificently landscaped grounds. Guest rooms and suites will embrace a stylish modern

design with an elegant palate of rich fabrics in hues of turquoise and purple. The Grand Palm Suite will occupy 270m² on the top floor of the Manor House overlooking the 850m² pool and private harbour.

Below: Low Rise Mansions – suite.





Sumptuous bathrooms will feature oversized freestanding bathtubs and drenching rain showers, with the finest inlaid marble from Italy and Spain.

Throughout the resort, guests will enjoy the genuine hospitality and gracious service for which One&Only is renowned.

Below: Low Rise Mansion – suite living area.
Opposite: Low Rise Mansion – suite bathroom.





Nestled within gardens of verdant tropical bloom, One&Only The Palm will welcome guests to a serene residential environment with exquisitely styled Low Rise Mansions and Beachfront Villas surrounding the main Manor House and pool.









Expansive floor-to-ceiling windows will create a decidedly elegant and inviting ambience in the Conservatory, serving throughout the day. Silver leaf and cut-quartz crystal will accent flourishes of stylised Arabian design as two live cooking stations prepare Oriental and Middle Eastern cuisines.

Deep earth tones, rich marble floors and an intricately patterned crystal ceiling will provide an atmosphere of sophisticated romance for evening dining on contemporary Italian cuisine.

Opposite: Dining at the 'Conservatory'. Below: Romantic dining.



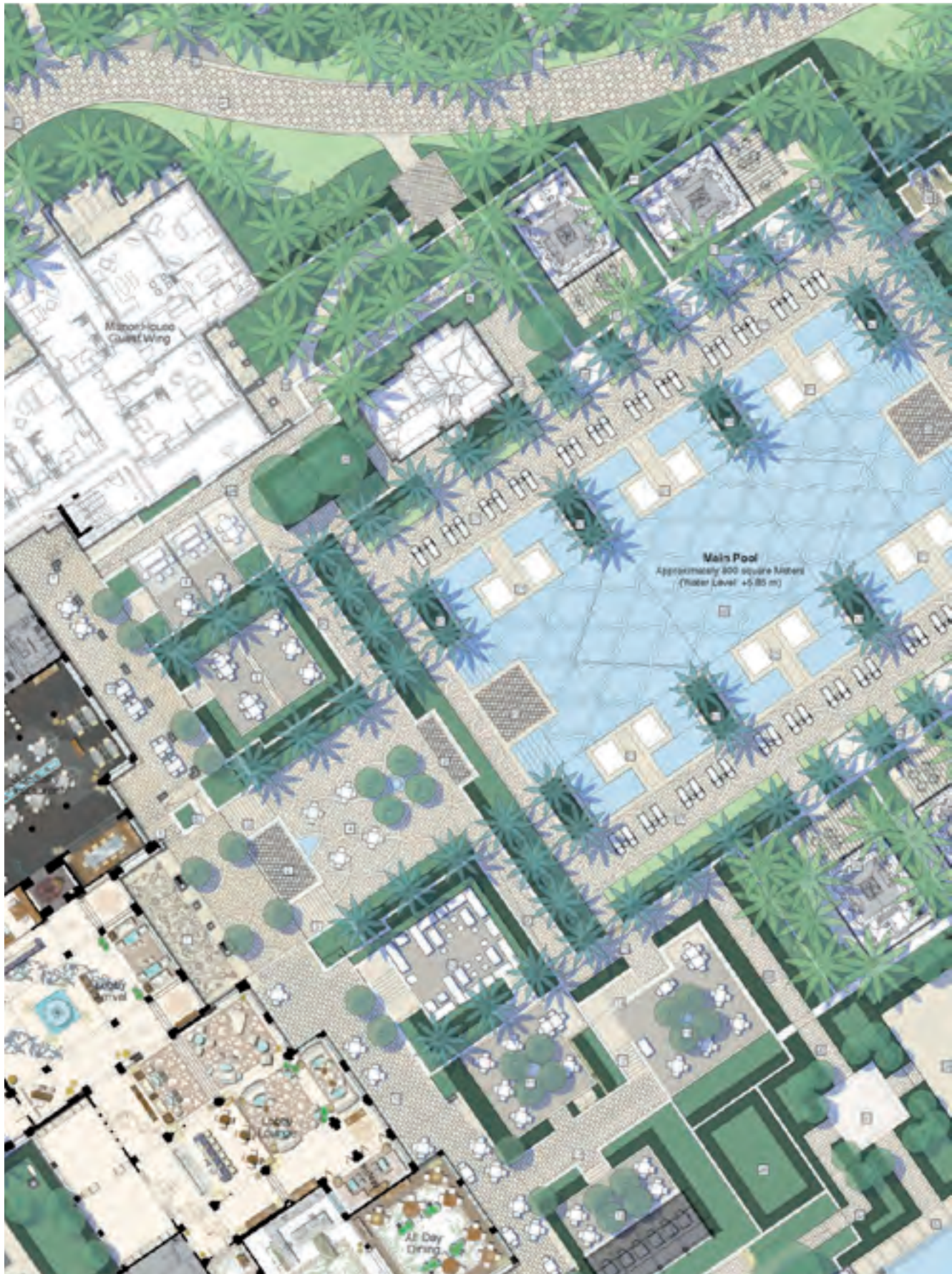
Sweeping panoramic views of the Gulf and Dubai skyline beyond, the striking Marina Restaurant with Al Fresco dining will open onto a fashionable overwater chill-out lounge with daybeds, beach-side tables and bar.

With an energised vibe moving from day into night, this ultra-chic indoor/outdoor venue is situated adjacent to the Marina, enabling guests entry by private yacht or One&Only Water Taxi.

Below: Private Harbour with Marina. Above right: Marina Lounge.









Under the gentle cover of hundreds of palm trees, guests may indulge in the tranquility of the pool with its lavish daybeds, concierge service and relaxing music. Six private cabanas offer superior comfort with every conceivable amenity.



Opposite: Manor House terraces and pool
Above: Grand Pool Cabanas with HD, Hi-Fi, LCD, internet, over-sized designer day bed on water pods

With sublime perfection, the One&Only Spa will offer rejuvenating treatments in eight private suites surrounding a central courtyard and private spa pool. Wellness facilities include a state-of-the-art fitness centre with Kinesis studio, tennis court, Bastien Gonzales Mani:Pedi:Cure Studio and pampering beauty salon.

Opposite: 2,400sqm freestanding indoor and outdoor spa, fitness and beauty facilities.



